



## **BATANS DEMOGRAPHICS**

Member's Vehicles by Make/Model

Member's Location

#s of Vehicles Owned by Members

Members Vehicles by Year of Manufacture

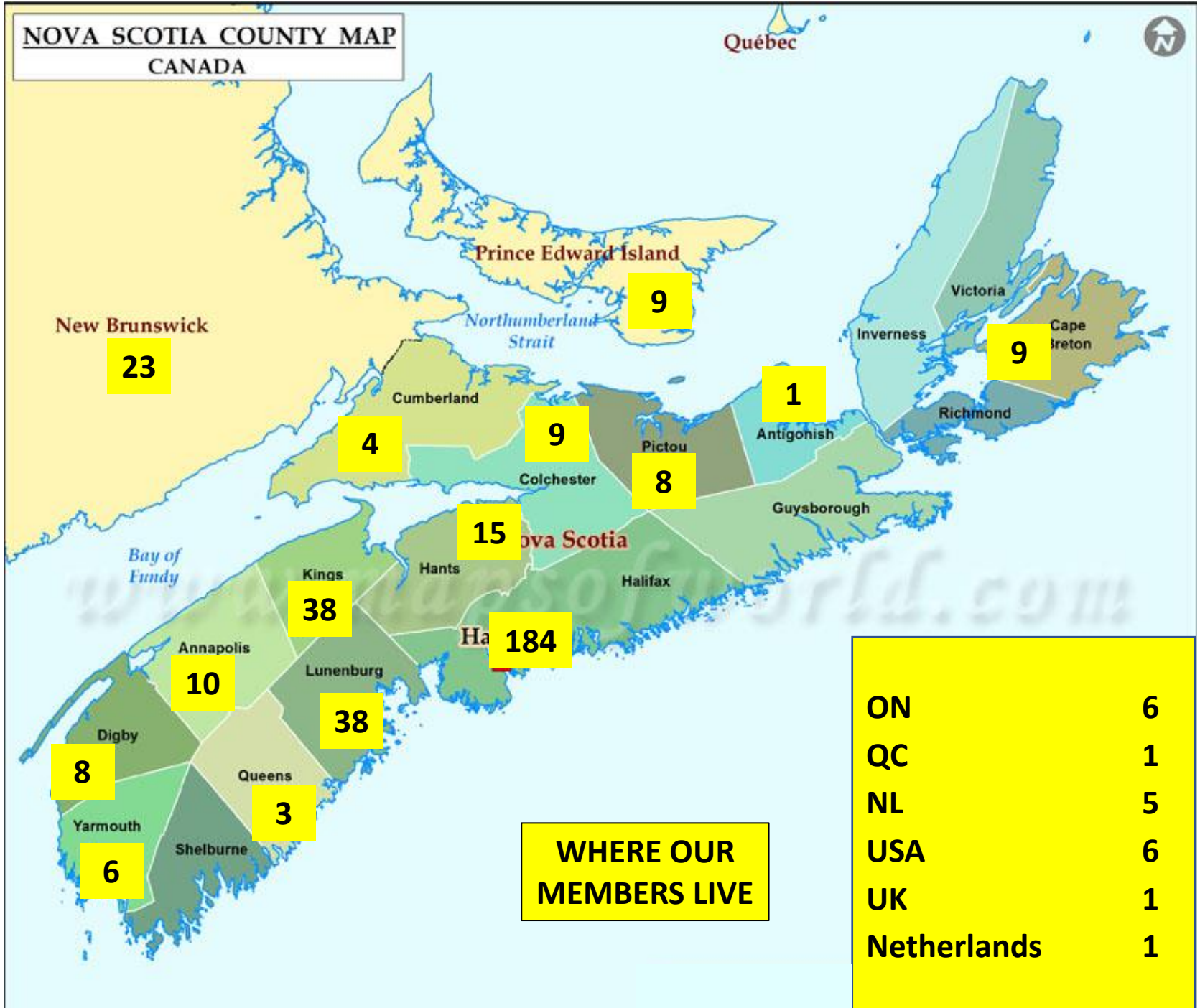
13 March 2020

## MEMBER'S CARS

*ARMSTRONG SIDDELEY*	1	*JAGUAR*	96	*JENSEN*	4	*PANTHER*	1
*AUSTIN*	38	*XK120*	5	*LAND ROVER*	82	*PEMBLETON*	1
*HEALEY 100*	7	*XK140*	1	*SERIES*	4	*RELIANT*	1
*HEALEY 3000*	14	*XK150*	3	*DEFENDER*	4	*RILEY*	1
*HEALEY BUGEYE SPRITE*	3	*Mk1*	1	*DISCOVERY*	22	*ROLLS ROYCE*	6
*HEALEY SPRITE*	3	*Mk2*	4	*RANGE ROVER*	13	*SINGER*	1
*1800*	2	*3.8S*	1	*RANGE ROVER VELAR*	8	*SUNBEAM*	9
*CAMBRIDGE*	2	*MK IX*	1	*RANGE ROVER EVOQUE*	30	*ALPINE*	4
*A40*	3	*340*	1	*LOTUS*	3	*TIGER*	5
*BIG SEVEN*	1	*420*	2	*MG*	166	*TRIKING*	1
*12/6*	1	*E-TYPE*	17	*MG J2*	1	*TRIUMPH*	60
*GIPSY*	2	*F-TYPE*	3	*MG T*	17	*TR3*	5
*BENTLEY*	1	*S-TYPE*	2	*MGA*	14	*TR4*	5
*BERKELEY*	0	*X-TYPE*	2	*MGB*	104	*TR6*	27
*CATERHAM*	1	*XJ*	17	*MGB GT*	16	*TR7*	4
*COBRA*	1	*XJ-S*	8	*MGC*	4	*TR8*	1
*DAIMLER*	3	*XK*	10	*MGF*	2	*GT6*	4
*FAIRWAY*TAXI*	1	*XE*	3	*MIDGET*	8	*HERALD*	1
*FORD*	5	*XF*	2	*MINI*	39	*SPITFIRE*	12
*GRANADA*	1	*E-PACE*	3	*MORGAN*	5	*STAG*	1
*PREFECT*	2	*F-PACE*	9	*MORRIS*	5	*TVR*	2
*ANGLIA*	2	*I-PACE*	1	*MINOR*	4	*VANDEN PLAS*	1
				*OXFORD*	1	*VAUXHALL*	2
						*WOLSELEY*	1

**NOVA SCOTIA COUNTY MAP**  
CANADA

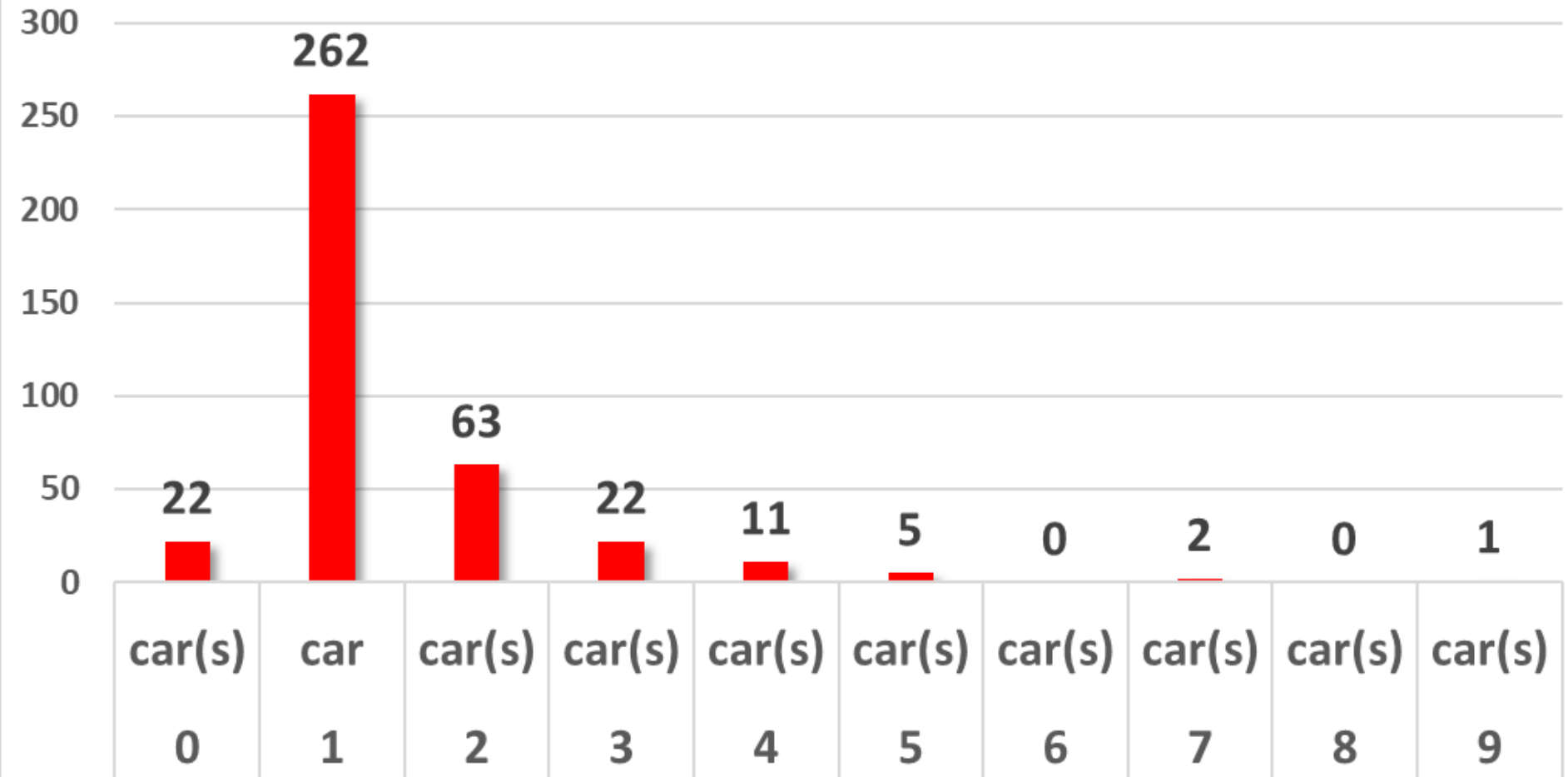
Québec



**WHERE OUR MEMBERS LIVE**

ON	6
QC	1
NL	5
USA	6
UK	1
Netherlands	1

## # OF OWNERS WITH "N" CARS



### Number of Cars by Year of Manufacture

