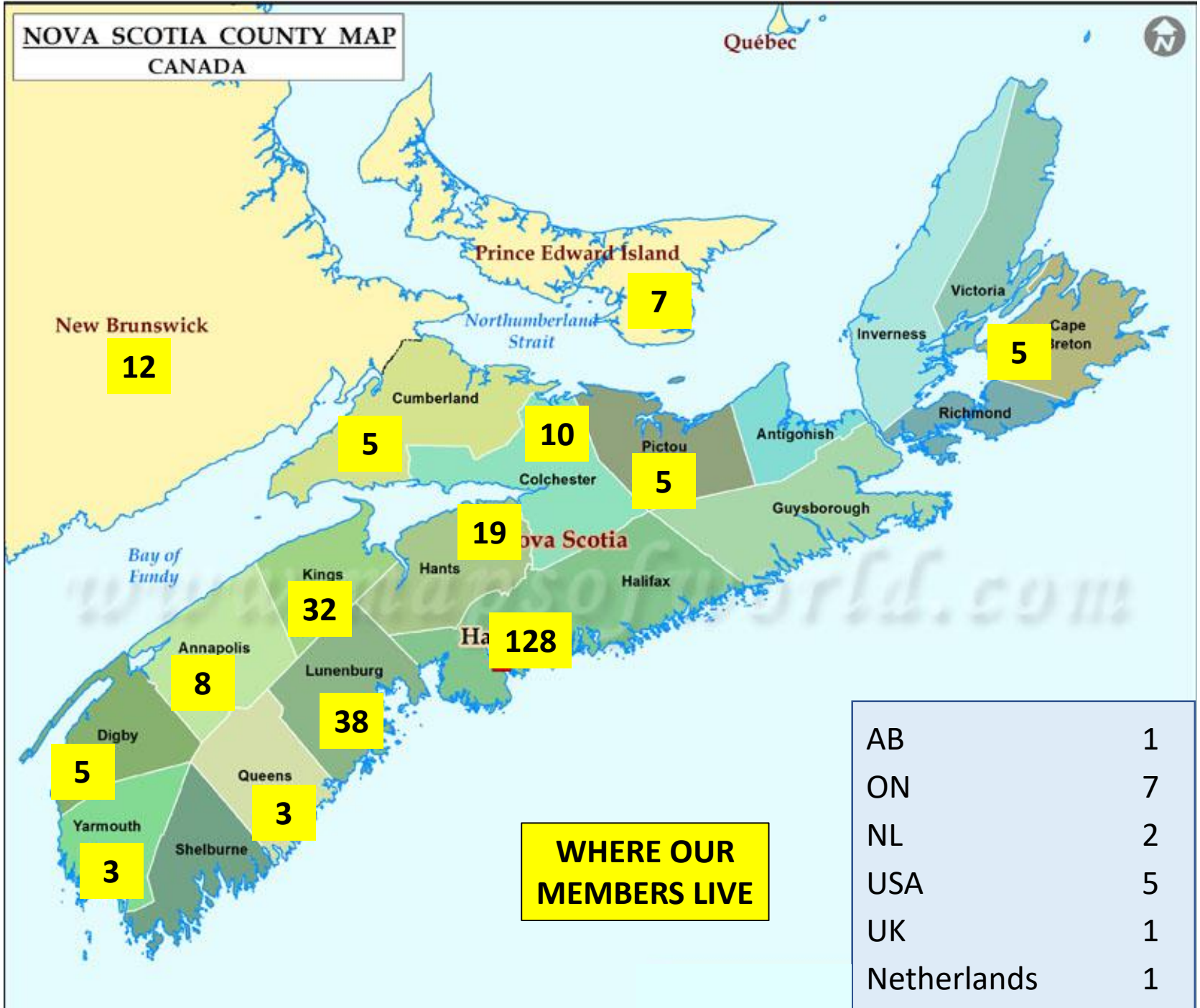


MEMBER'S CARS							
ARMSTRONG SIDDELEY	1	*ISETTA*	1	*MG*	168	*SINGER*	1
AUSTIN	40	*JAGUAR*	76	*MG J2*	1	*SUNBEAM*	8
100	8	*XK120*	5	*MG T*	17	*ALPINE*	4
3000	17	*XK140*	1	*MGA*	16	*TIGER*	4
SPRITE	5	*XK150*	3	*MGB*	102	*TALBOT*	0
1800	2	*Mk1*	2	*MGB GT*	15	*TRIKING*	1
CAMBRIDGE	3	*Mk2*	4	*MGC*	4	*TRIUMPH*	67
WESTMINSTER	0	*3.8S*	1	*MGF*	2	*TR3*	6
A30	0	*MK IX*	1	*MIDGET*	11	*TR4*	5
A40	2	*340*	1	*MINI*	38	*TR6*	28
BIG SEVEN	1	*420*	2	*MORGAN*	3	*TR7*	3
GIPSY	2	*E-TYPE*	17	*MORRIS*	8	*TR8*	2
BENTLEY	1	*XJ*	17	*MINOR*	5	*GT6*	7
BERKELEY	1	*XJ-S*	7	*OXFORD*	2	*SPITFIRE*	13
CATERHAM	1	*XK*	8	*EIGHT*	1	*HERALD*	2
COBRA	3	*XF*	2	*PANTHER*	1	*STAG*	1
DAIMLER	4	*X-TYPE*	3	*PEMBLETON*	1	*TVR*	2
*FAIRWAY*TAXI*	1	*S-TYPE*	2	*RANGE ROVER*	0	*VANDEN PLAS*	1
FORD	6	*JENSEN*	4	*RELIANT*	1	*VAUXHALL*	2
GRANADA	1	*LAND ROVER*	7	*RILEY*	1	*WOLSELEY*	1
PREFECT	1	*LOTUS*	4	*ROLLS ROYCE*	6		
ANGLIA	2						
ZEPHYR	1						
SPECIAL LEMANS	1						

NOVA SCOTIA COUNTY MAP
CANADA

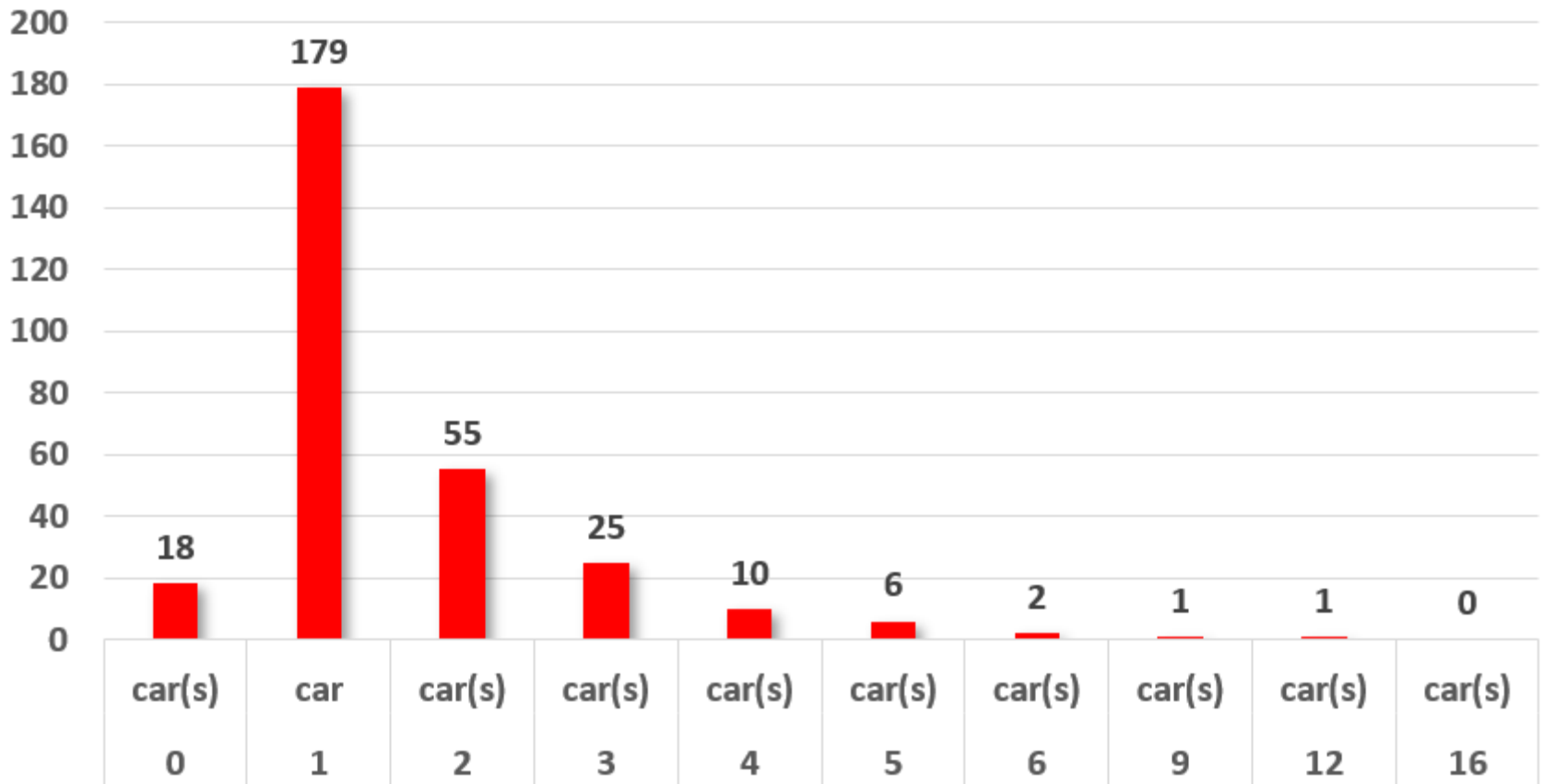
Québec



WHERE OUR MEMBERS LIVE

AB	1
ON	7
NL	2
USA	5
UK	1
Netherlands	1

OF OWNERS WITH "N" CARS



Number of Cars by Year of Manufacture

